



अन्नपूर्णदेवी विद्या प्रसारक संस्था संचालित.

कै.अण्णासाहेब पितांबर शंकर वाडिले कला महाविद्यालय, थाळनेर

थाळनेर, ता.शिरपुर. जि.पुळे (425421)

www.avpsthalthner.org

Email : pswadilearscollege2000@gmail.com

02563-285339

- भेटवस -

- प्राचार्य -

श्री.शारदचंद्र पितांबर वाडिले

डॉ. दिलीप रामभाऊ जगताप

7.1.5 GREEN CAMPUS INITIATIVES

7.1.5.1. The institutional initiatives for greening the campus are as follows:

- Restricted entry of automobiles
- Pedestrian Friendly pathways
- Ban on use of Plastic
- Landscaping with trees and plants

RESPONSE:

A.V.P.S. Sanchalit Late Annasaheb P. S. Wadile Arts College, Thalner college in Maharashtra, has always taken a green agenda. Despite being primarily a Arts institution, it has shown remarkable awareness in maintaining an eco-friendly campus. On visiting the Campus, one can experience the aesthetic and elegant buildings, spacious grounds and lush green environment conducive for teaching-learning process.

USE OF BICYCLES

Students and staff coming from nearby villages also prefer bicycle as a mode of transport for attending the college. It is environment friendly and prevents pollution

PEDESTRIAN FRIENDLY PATHWAYS

Vehicle parking space is provided at the main entrance of the college campus. As the campus is vehicle free with some exceptions, students and staff experience comfort walking through the pedestrian friendly pathways. The boundary of college is lined with trees and they are properly maintained by the campus maintenance committee.

BAN ON USE OF PLASTIC

Single-use plastic items such as plastic bottles, bags, spoons, straws and cups are banned completely and awareness is created among staff and students through orientation and display boards in the premises. To restrict the use of plastic, measures have been taken to replace plastic tea cups and glasses with steel glasses. The staff and students are informed to use steel or copper water bottles instead of plastic bottles.



LANDSCAPING WITH TREES AND PLANTS

Landscaping of the college is worth seeing and reflects aesthetic sense. The institute has a canopy of trees and plants to make the environment pollution free to safeguard the health of all the inmates. The lawns and the trees provide shade and beautiful ambience. Utmost care is taken to develop and maintain green landscaping by trained gardeners and supervisor. The construction, maintenance and beautification committee constituted in the college looks after the development and maintenance of the greenery in the campus. The institute authorities are taking initiatives to make the campus paperless. Internal communication in the campus, through e-mail or e-messages, is driving towards paperless office. Electronic gadgets are preferred to transfer and store the official data and information. Library and examination sections are equipped with efficient software.



थाळनेर कला महाविद्यालयात स्वच्छता हि सेवा उपक्रम साजरा

थाळनेर येथील कै.अण्णासाहेब पितांबर शंकर वाडिले कला महाविद्यालयात स्वच्छता हि सेवा हा उपक्रम, विद्यार्थी विकास विभाग, राष्ट्रीय सेवा योजना विभाग यांच्या संयुक्त विद्यमाने साजरा करण्यात आला. सदर कार्यक्रम कला महाविद्यालयाचे प्राचार्य डॉ.डी.आर.जगताप सर व अ.दे, वि.प्र. संस्थेचे सचिव मा.आप्पासाहेब एन.पी.वाडिले यांच्या मार्गदर्शनाखाली घेण्यात आला. यावेळी स्वतः प्राचार्यसह महाविद्यालयातील सर्व प्राध्यापक

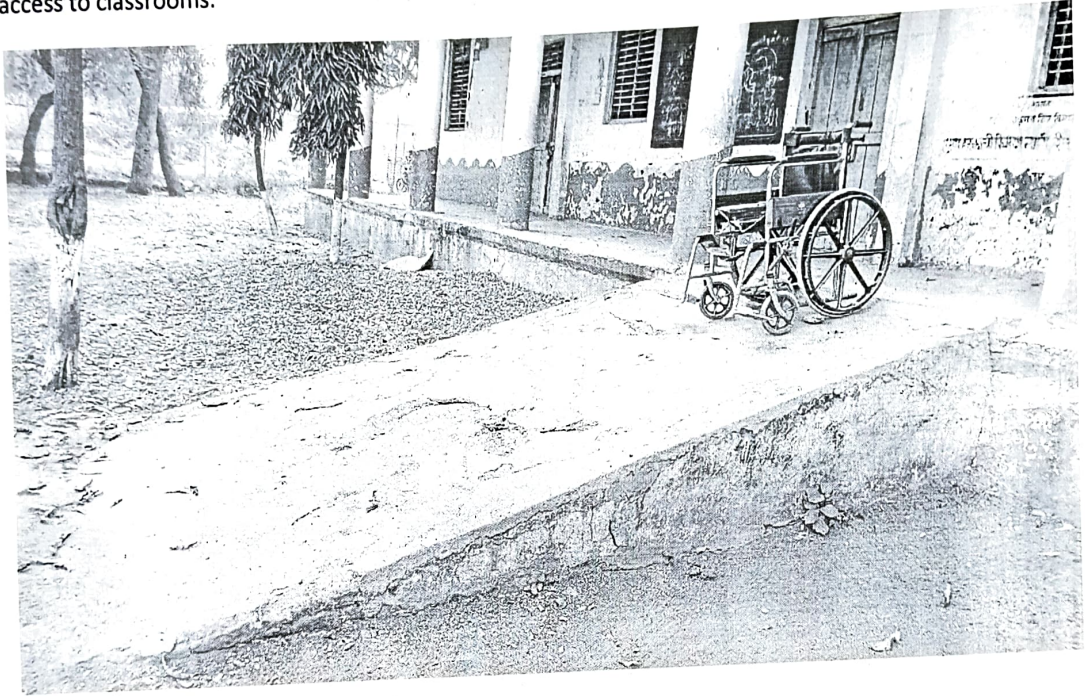
व शिक्षकेतर कर्मचारी सह विद्यार्थी व विद्यार्थ्यांनी महाविद्यालयाच्या परिसराची स्वच्छता केली. यावेळी प्रा. च. अ. य. डॉ.डी.आर.जगताप, संस्थेचे सचिव आप्पासाहेब वाडिले, प्रा.विजय झुंजारराव, वि.वि.आधि.प्रा.सतीश बोरसे, डॉ.गिरीश गावित, रा.से.यो. आधि.प्रा.महेश रणदिवे, भाऊ सो.नवनित वाडिले, प्रा.सुभाष राठोड, प्रा.रघुनाथ सोनवणे,, डॉ.राजकुमार आहिरे, सह शिक्षकेतर कर्मचारी व विद्यार्थीवृंद या उपक्रमात सहभागी झाले होते

Cleanliness is service to human beings this event done by NSS and Student Development Officer.



Disabled-friendly, Barrier Free Environment Washroom, Lifts and Ramps in the Building


The Institute ensures creation and support Disabled-friendly campus. The campus aims to create a healthy environment by ensuring equal opportunities immaterial any disabilities. The campus is well equipped with Disabled friendly washrooms, Disabled-Friendly Barrier Free Pathways, ramps for easy access to classrooms.



Disabled-friendly, Barrier Free Environment, Wheel chair and Computer with Braille Keyboard

Wheel chairs are available in the campus for disabled people or persons in need in any circumstances. Late Annasaheb P. S. Wadile Arts College has also provided an inclusive computer system with Braille keyboard to provide a techno-friendly and barrier free environment to all persons with disabilities.




Principal
Late Annasaheb P.S. Wadile
Arts College, Thalner
Tal. Shirpur, Dist. Dhule